

TASNEEM HOSSAM

Design Portfolio





List Of Content

1 introduction

A brief overview of me, my studies, my field of work, and my experience

2 interior design

The interior design section includes different types of spaces with their details

3 HOME RECEPTION

Different designs for a home reception with its details

4 STUDIO

Design of a complete studio with its details

5 LIVING AREA

Design for living in different shapes and innovative ideas

6 BEDROOMS

A luxurious, elegant and simple bedroom design with a lot of warmth and tranquility

7 KITCHEN


Kitchen design with distinctive and practical details and many ideas that save time and effort

8 EXTERIOR DESIGN

The external design section, which contains external elements, whether facades, landscaping, or plans

9 CLASSIC &modern FACADE

Section of various facades with their details, whether classic or modern facades



About Me

I am Tasneem Hossam, an architect. I graduated from the Faculty of Engineering in 2019.

I have 5 years of experience in the field of architecture and decoration.

I have established my own brand, HAVANA. My design philosophy centers on delivering modern, distinctive, and creative solutions, reflecting a commitment to innovation in the field.



INTERIOR DESIGNS

- **HOME RECEPTION**

Different designs for a home reception with its details

- **STUDIO and chalet**

Design of a complete studio with its details

- **LIVING AREA**

Design for living in different shapes and innovative ideas

- **KITCHEN**

Kitchen design with distinctive and practical details and many ideas that save time and effort

- **BEDROOMS**

A luxurious, elegant and simple bedroom design with a lot of warmth and tranquility

- **OTHER DESIGNS**

Other designs such as booths, photography studio, etc



HOME RECEPTION

HOME RECEPTION AND STUDIO
AND HOTEL ROOM

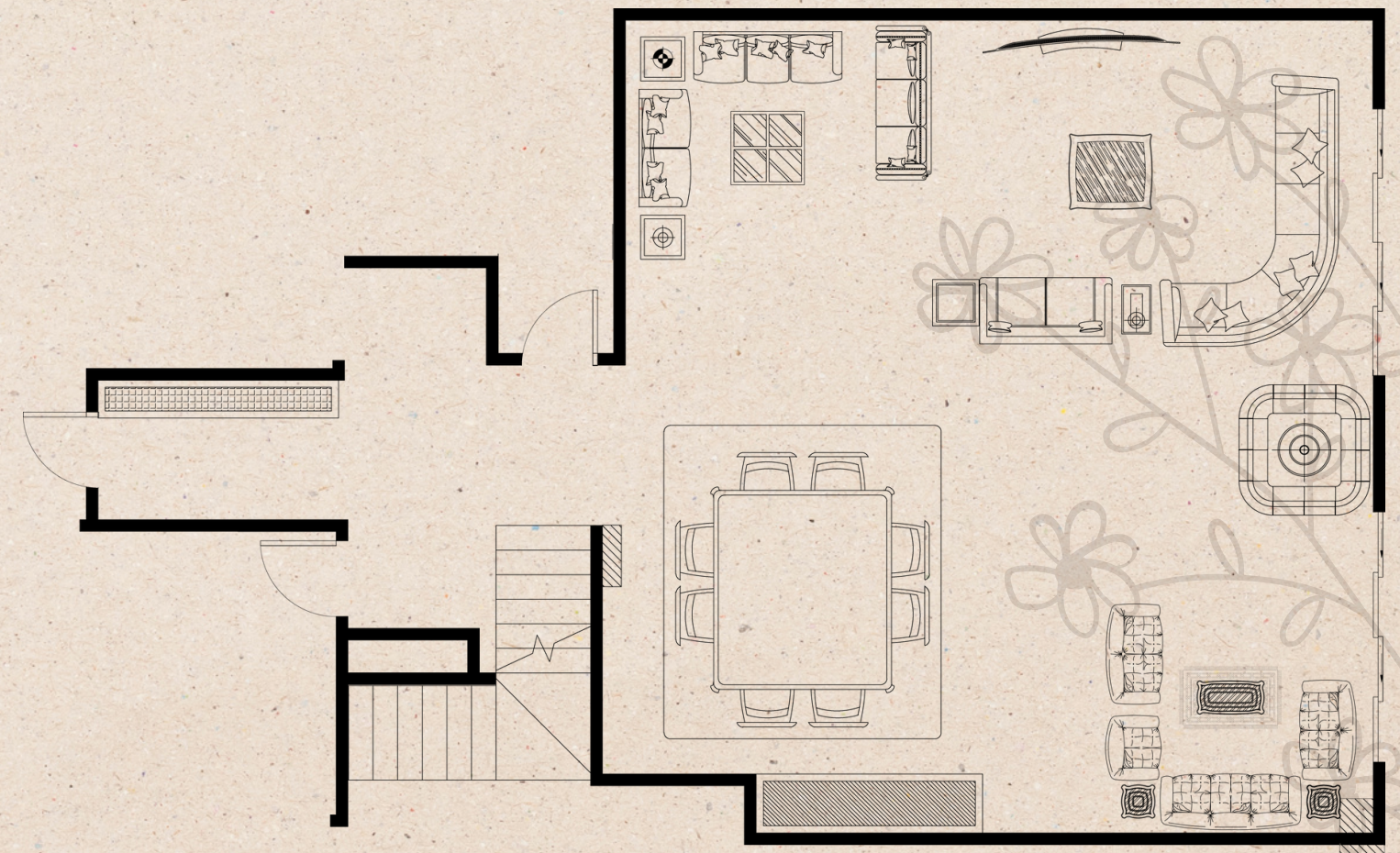


<https://www.behance.net/thosam365a73>



HOME RECEPTION

Colour Palette



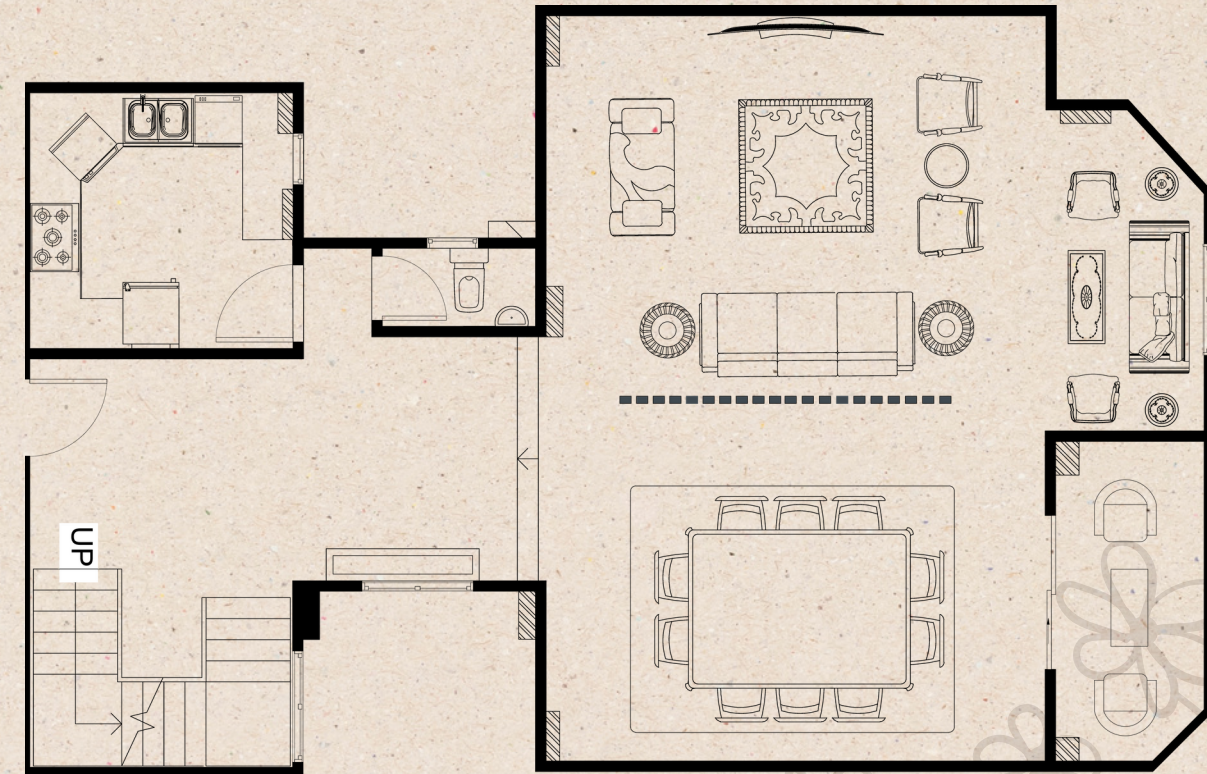


- Gray was used as the primary color as it reflects luxury, calm and simplicity,
- and the introduction of wood as a complement to the luxury
- A sliding door was introduced to merge the exterior view with the interior

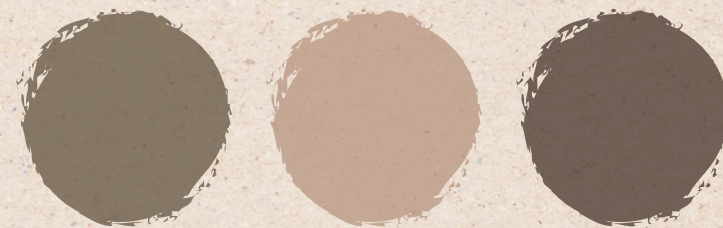




HOME RECEPTION



COLOR PALETTE



A design based on simplicity, calm colors, warm lighting, and distinctive modern contemporary elements



Vision

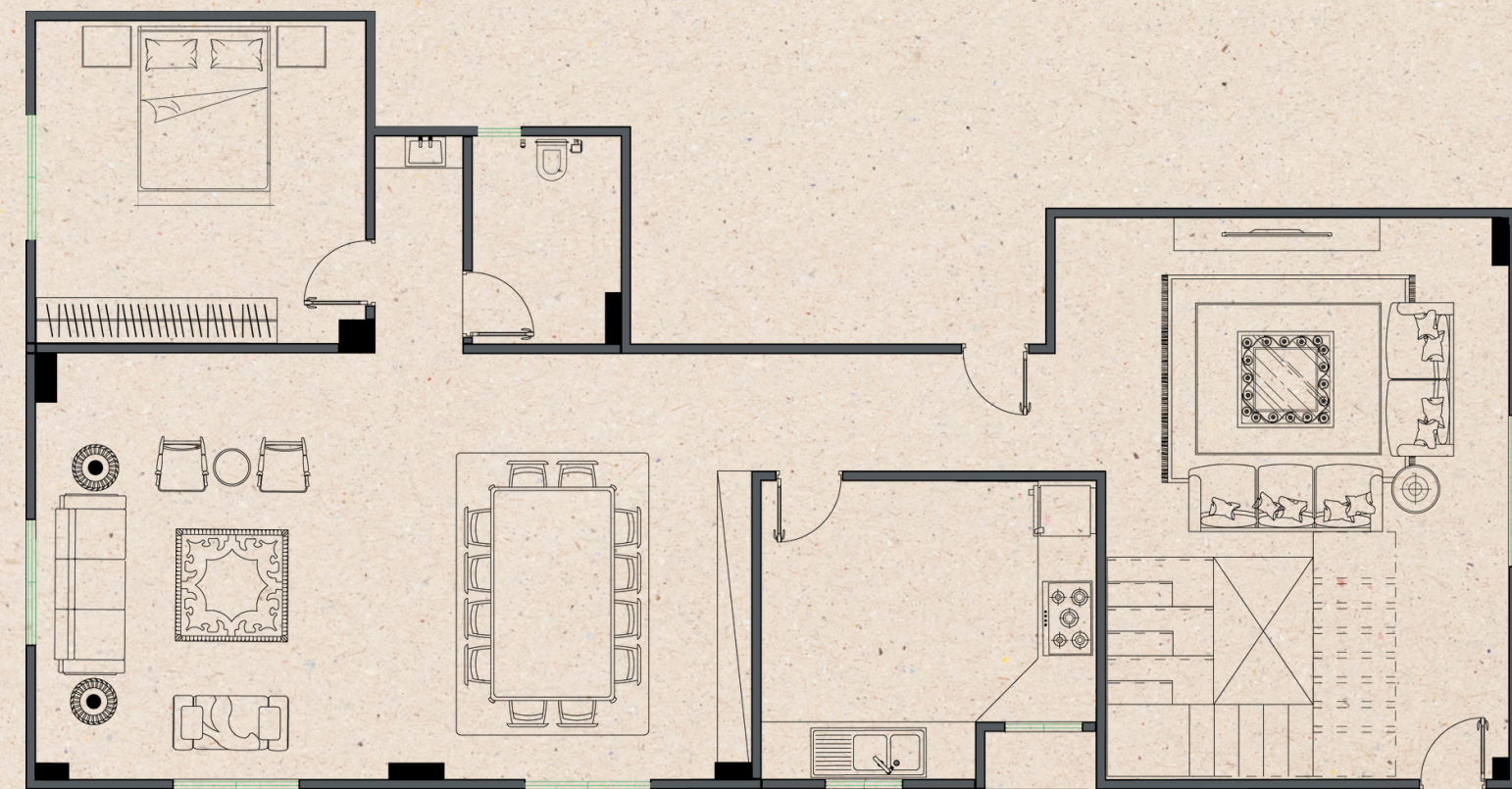


Mission



LUXURY

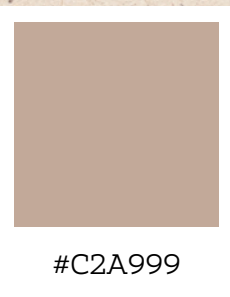
HOME RECEPTION





<https://www.behance.net/thosam365a73>

The space was designed using brown pallet, using hollow wood, and relying mainly on curves as a design idea

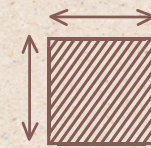


HOME STUDIO



LOCATION :

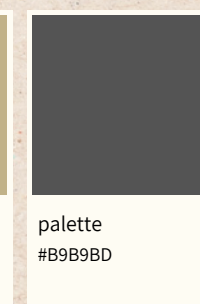
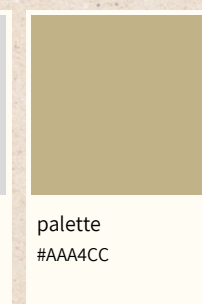
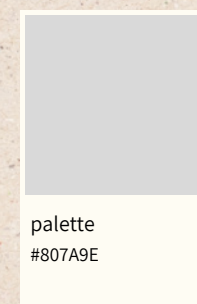
SAUDI ARABIA



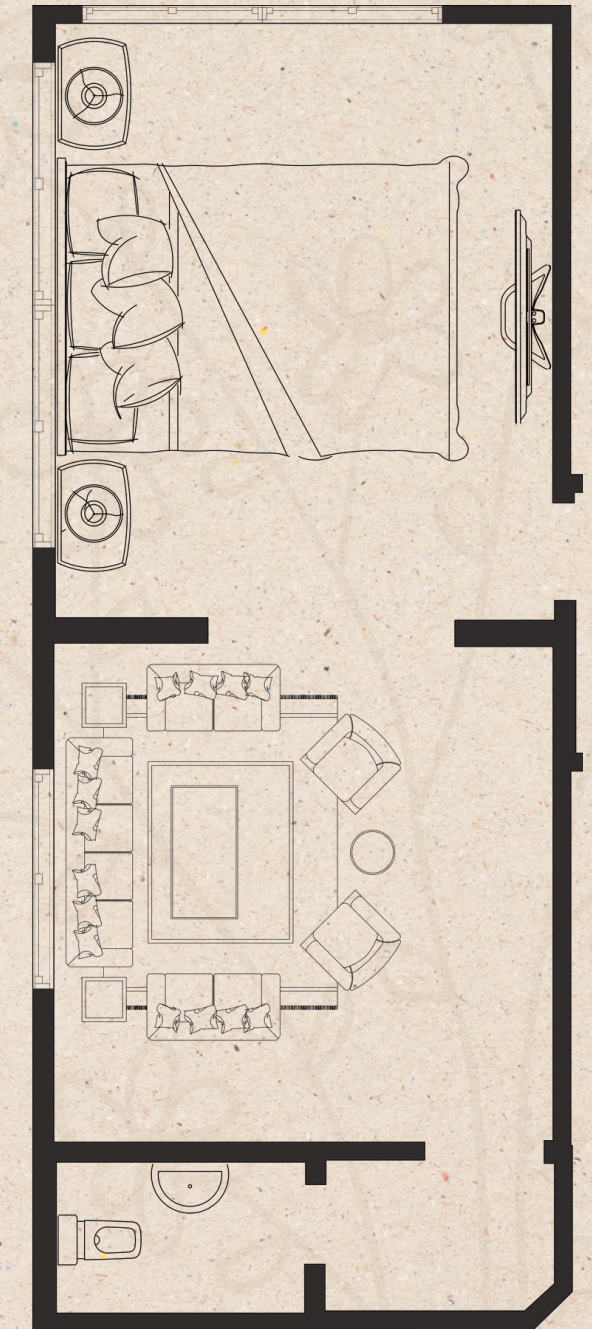
AREA SPACE :

110 M2

Color Palette



This studio was designed using luxurious shades of gray, and the spaces were exploited to the maximum extent to suit all uses





BED AND DINNING AREA



L I V I N G





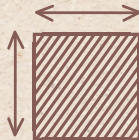
Paying attention to the smallest details
and utilizing spaces to create multi-use
spaces

Tourist chalet



LOCATION :

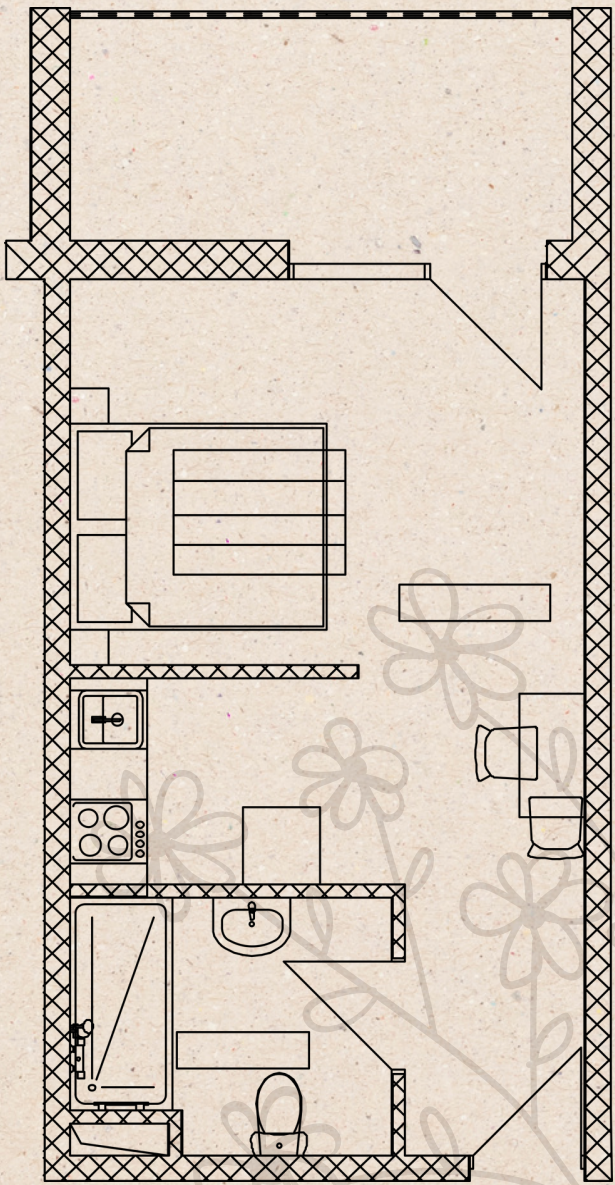
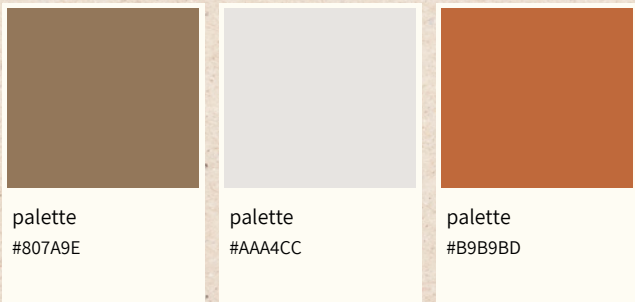
Georgia 



AREA SPACE :

21 M2

Color Palette

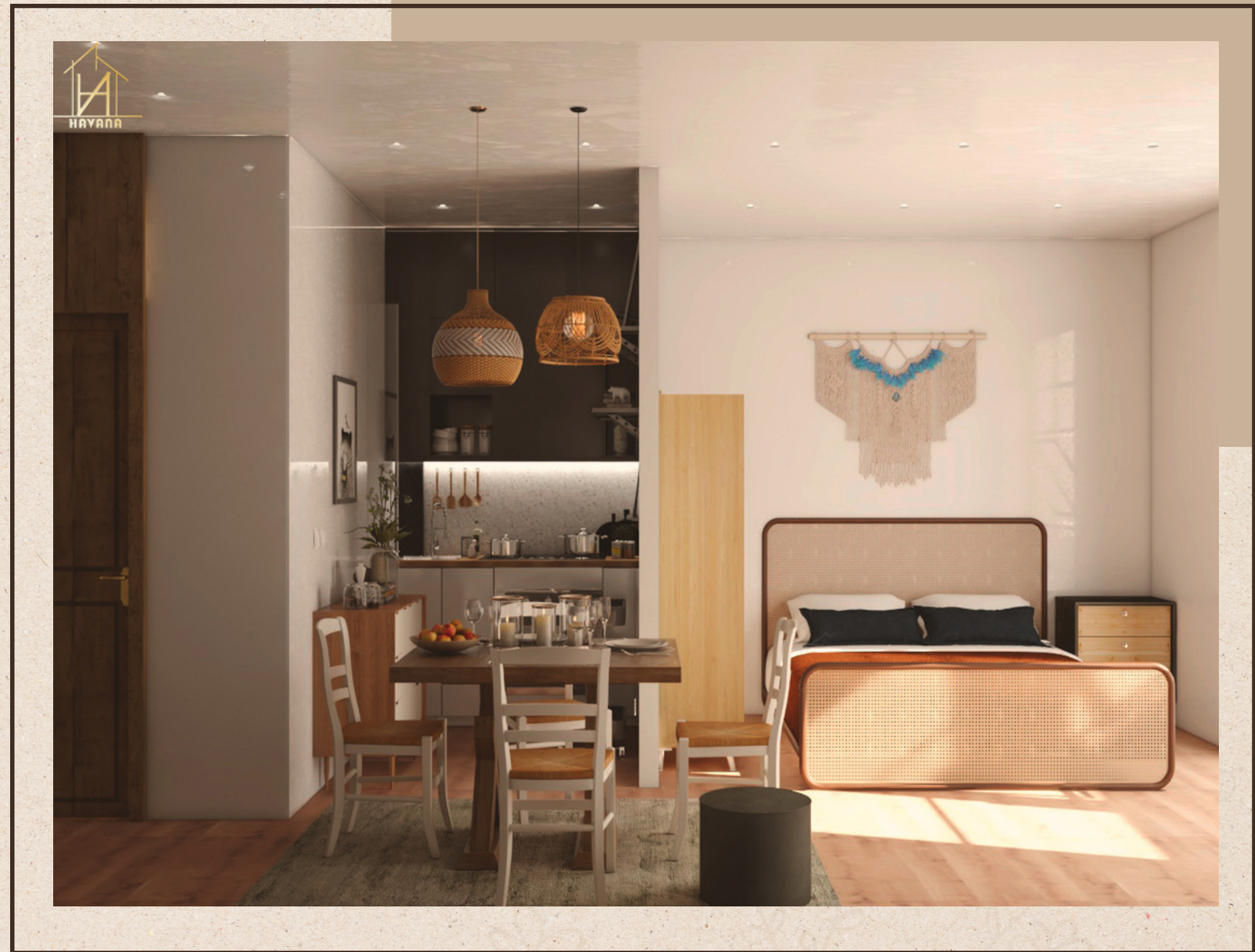




What We Do?

The chalet was designed using the Scandinavian system to blend in with the coastal environment in Georgia and used white wood to fit the nature of the design







Chalet SECOND STYLE

01

The rustic style was used in the design as it relies mainly on simple natural materials that appear in an old style with a feeling of the Middle Ages.

02

This style relies on organic materials, antique wood, black accentuated metals, wooden floors, the use of primitive elements, highlighting stone, and the use of a fireplace.



#decfbc

#c1b29e

#453a2c

#d2cfc4

#cdb990

#826c58



<https://www.behance.net/thosam365a73>

BED AREA

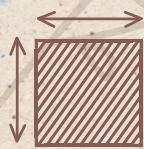


HOTEL ROOM



LOCATION :

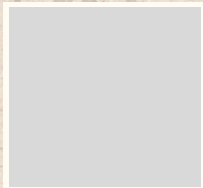
SAUDI ARABIA



AREA SPACE :

110 M2

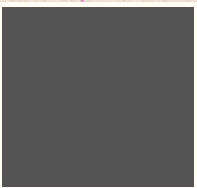
Color Palette



palette
#807A9E



palette
#AAA4CC



palette
#B9B9BD



<https://www.behance.net/thosam365a73>

Vision



Mission

<https://www.behance.net/thosam365a73>

simplicity



Hotel design always depends on simplicity, calm colors, and simple and practical furniture

LIVING

AREA

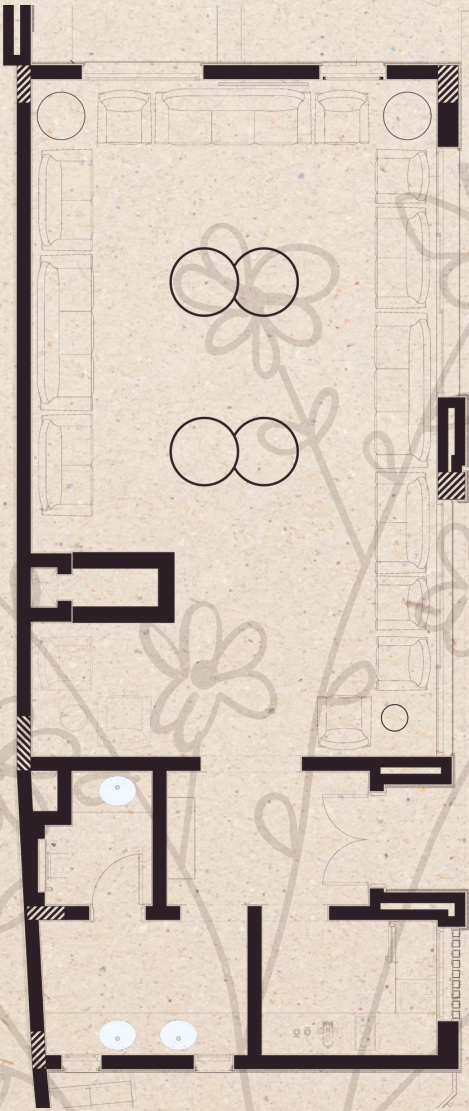
FAMILY AND COZY AREA



<https://www.behance.net/thosam365a73>

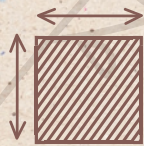


MEN'S COUNCIL



LOCATION :

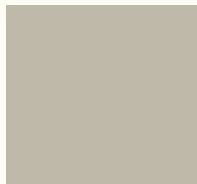
SAUDI ARABIA



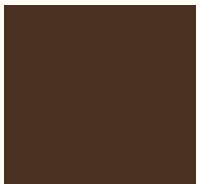
AREA SPACE :

50 M2

Color Palette



palette
#807A9E



palette
#AAA4CC



palette
#B9B9BD



<https://www.behance.net/thosam365a73>

The simplest colors and materials were used to show the space in a simple and distinctive way



Using large, wide windows overlooking a distinctive external void makes the space more beautiful and attractive and allows natural lighting to enter

<https://www.behance.net/thosam365a73>

A console was made at the entrance to the Majlis using simple natural materials with warm lighting



Distinctive outdoor sinks have been created with a simple design and hidden lighting

VILLA LIVING

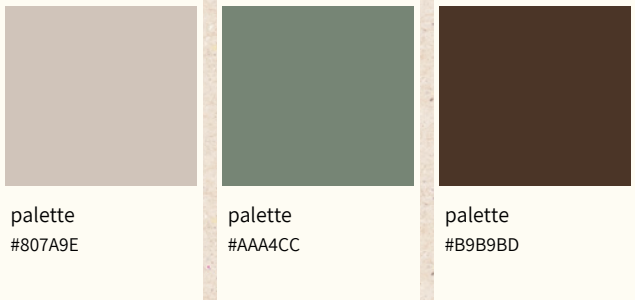
LOCATION :

EGYPT 

AREA SPACE :

80 M2

Color Palette



Vision



- Simplicity in design and choosing mint as a distinctive color adds vitality to the design
- Use natural wood in its natural color so that it blends with the natural green color



Modeling

TWIN HOUSE LIVING



LOCATION :

EGYPT



AREA SPACE :

35 M2

Color Palette



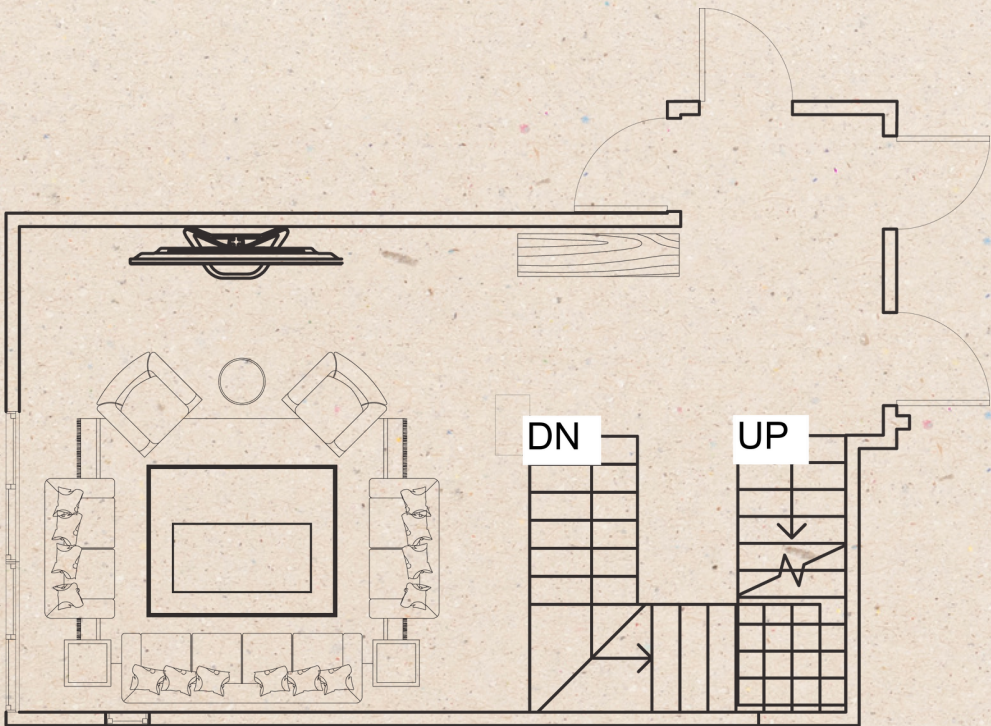
palette
#807A9E



palette
#AAA4CC



palette
#B9B9BD



<https://www.behance.net/thosam365a73>



PRICELESS



Presentations are communication tools that can be use as lectures, speeches, reports, and more. It is mostly presented before an audience.



ENTER
TAIMENT

<https://www.behance.net/thosam365a73>

INNOVATION



Choose calm, natural colors that are comfortable for the eye, with plants that add a lot of life and give a different aesthetic touch, and design appropriate lighting for the place, relying heavily on natural lighting.

BED ROOMS

BED ROOM AND DRESSING



<https://www.behance.net/thosam365a73>

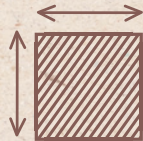


MASTER BEDROOM



LOCATION :

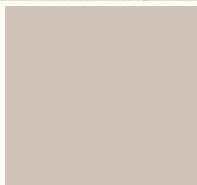
EGYPT 



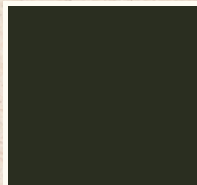
AREA SPACE :

30 M2

Color Palette



palette
#807A9E



palette
#AAA4CC



palette
#B9B9BD



<https://www.behance.net/thosam365a73>



<https://www.behance.net/thosam365a73>



<https://www.behance.net/thosam365a73>

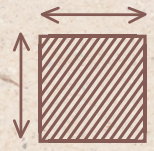


MASTER BEDROOM



LOCATION :

EGYPT 



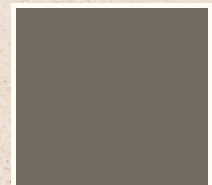
AREA SPACE :

20 M2

Color Palette



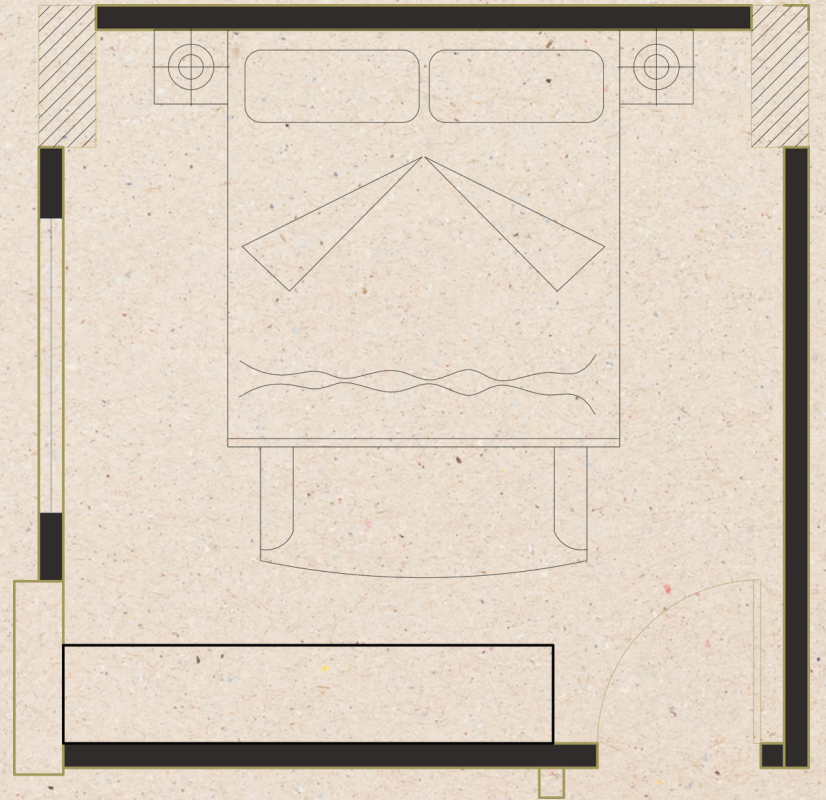
palette
#807A9E



palette
#AAA4CC



palette
#B9B9BD

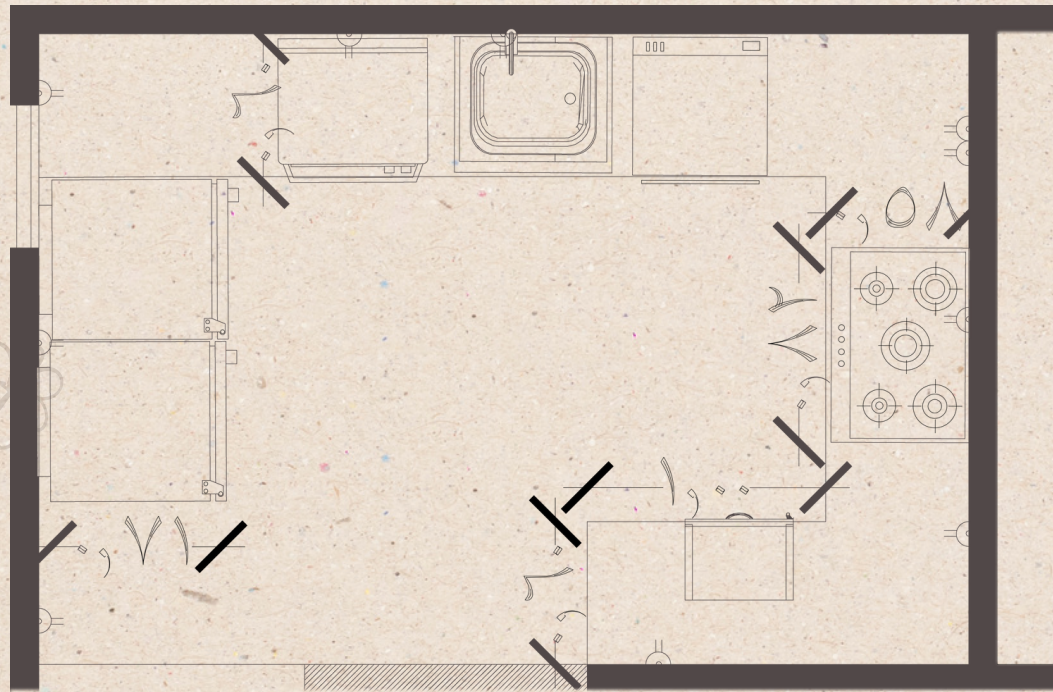


B
A
S
I
C



KITCHEN

The best division and
exploitation in a small
space



Vision



SUITS STUDIO

Creative studio design like
the famous photo session

<https://www.behance.net/thosam365a73>



ADHA



MESSI VS CRISTIANO

The design idea was taken from a photo session of Messi and Ronaldo at the World Cup, which was filmed by the famous brand Louis Vuitton, playing chess.

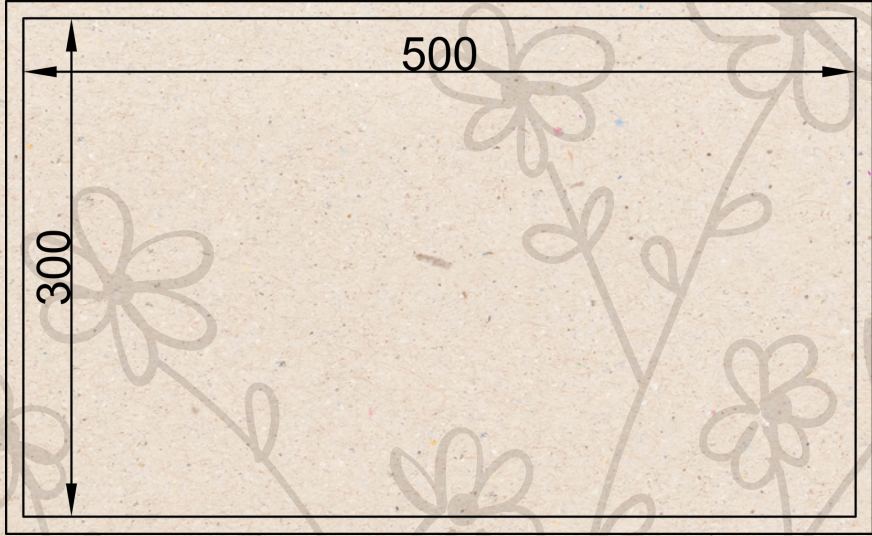


<https://www.behance.net/thosam365a73>

HARMONY AND CHALLENGE

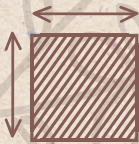


BOOTH DESIGN



LOCATION :

TURKEY 



AREA SPACE :

20 M2

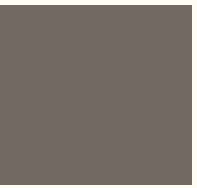
Color Palette



palette
#807A9E



palette
#AAA4CC



palette
#B9B9BD





V
A
L
D
I
V
I
A

SKIN CARE
AND
COSMETICS



EXTERIOR DESIGNS

- **MODERN FACADE**

Facade design with a distinctive modern shape, different configurations, modern details and modern materials

- **CLASSIC FACADE**

Luxurious classic facade design, distinctive details and special materials to create attractive classic details

- **OUTDOOR AND LANDSCAPE**

Designing tourist resorts, landscapes, and various outdoor places



MODERN FACADE

DISTINCTIVE MODERN FACADES

<https://www.behance.net/thosam365a73>



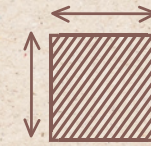


GORGEIOUS HOUSE FACADE



LOCATION :

EGYPT



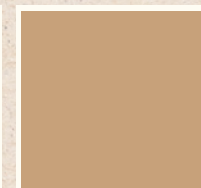
AREA SPACE :

320 M2

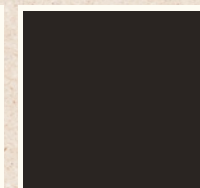
Color Palette



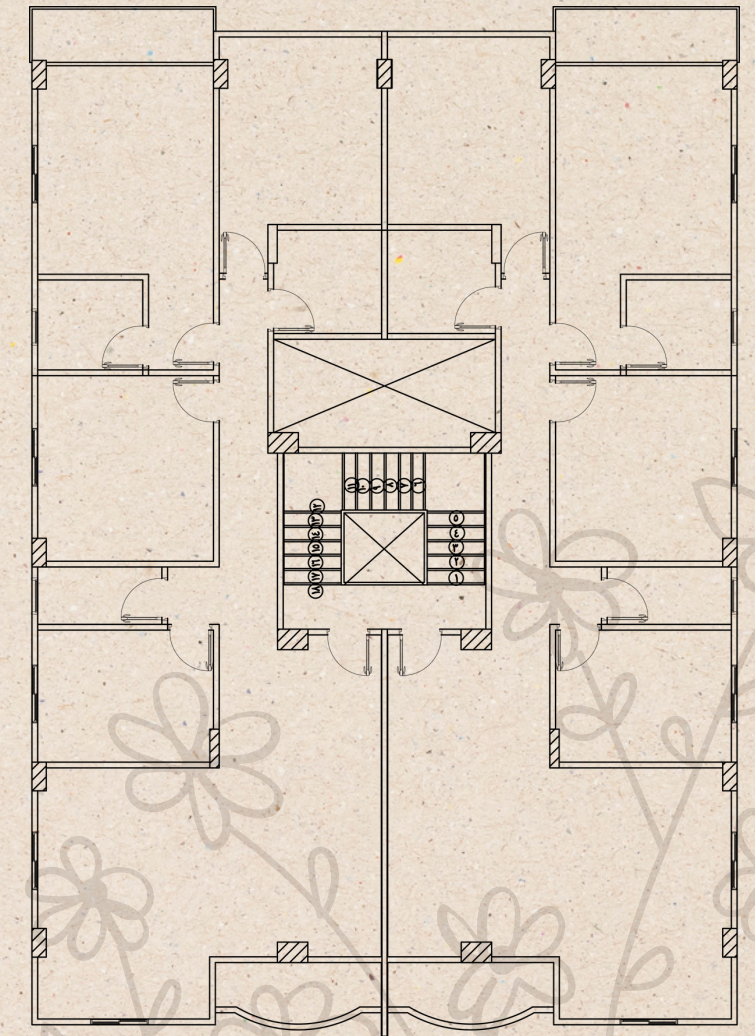
palette
#807A9E



palette
#AAA4CC



palette
#B9B9BD



<https://www.behance.net/thosam365a73>

FANTASY AND LEGEND



Choosing distinctive, different, and calm colors and incorporating new elements such as iron in a different form, as well as wood



THE GOALS



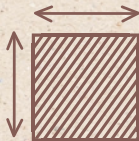
How beautiful it is to pay attention to simplicity with various details that highlight the beauty of the design

About Me



LOCATION :

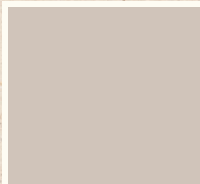
EGYPT 



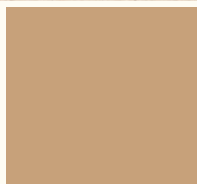
AREA SPACE :

230 M2

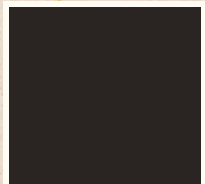
Color Palette



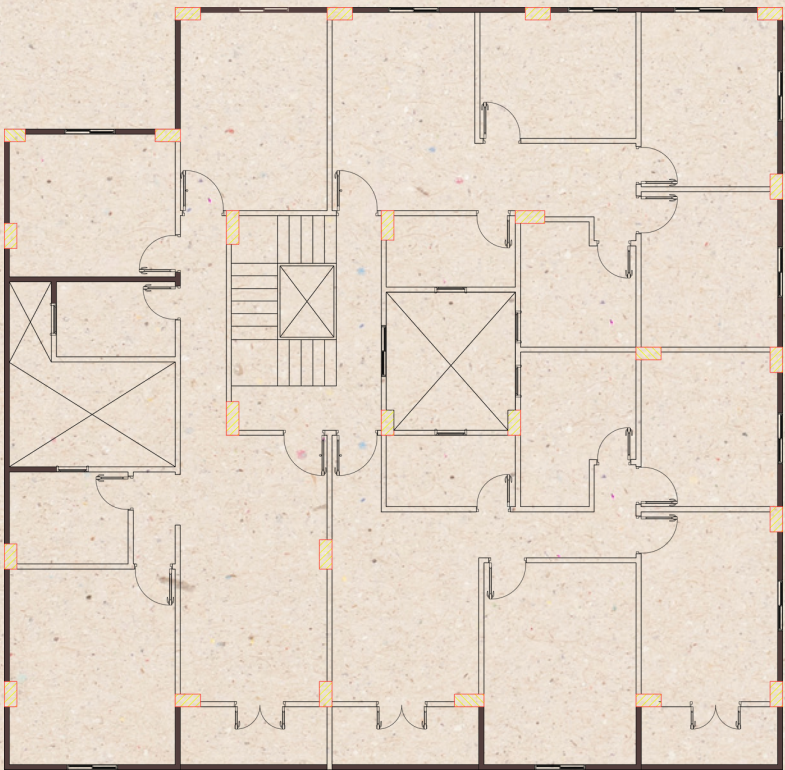
palette
#807A9E



palette
#AAA4CC



palette
#B9B9BD



<https://www.behance.net/thosam365a73>



<https://www.behance.net/thosam365a73>

Vision



CLASSIC FACADE

ATTRACTIVE CLASSIC FACADE

<https://www.behance.net/thosam365a73>

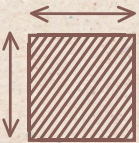


CORNICHE VILLA



LOCATION :

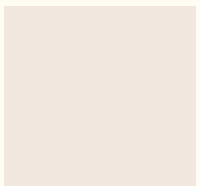
EGYPT



AREA SPACE :

230 M2

Color Palette



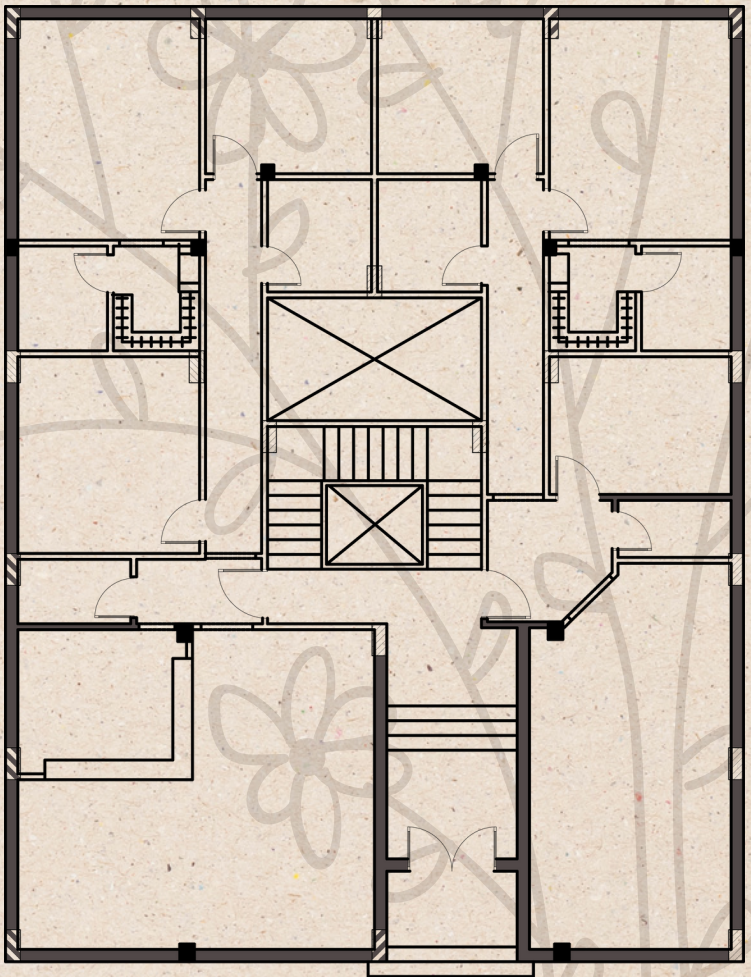
palette
#807A9E



palette
#AAA4CC



palette
#B9B9BD



<https://www.behance.net/thosam365a73>



LUXURY



<https://www.behance.net/thosam365a73>

ACCURACY



The design was made by choosing sky blue and white colors and following the distinctive European style

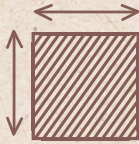


CLASSIC TOWER



LOCATION :

EGYPT 



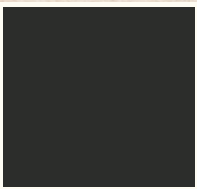
AREA SPACE :

186M2

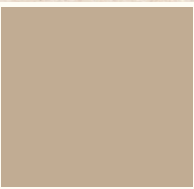
Color Palette



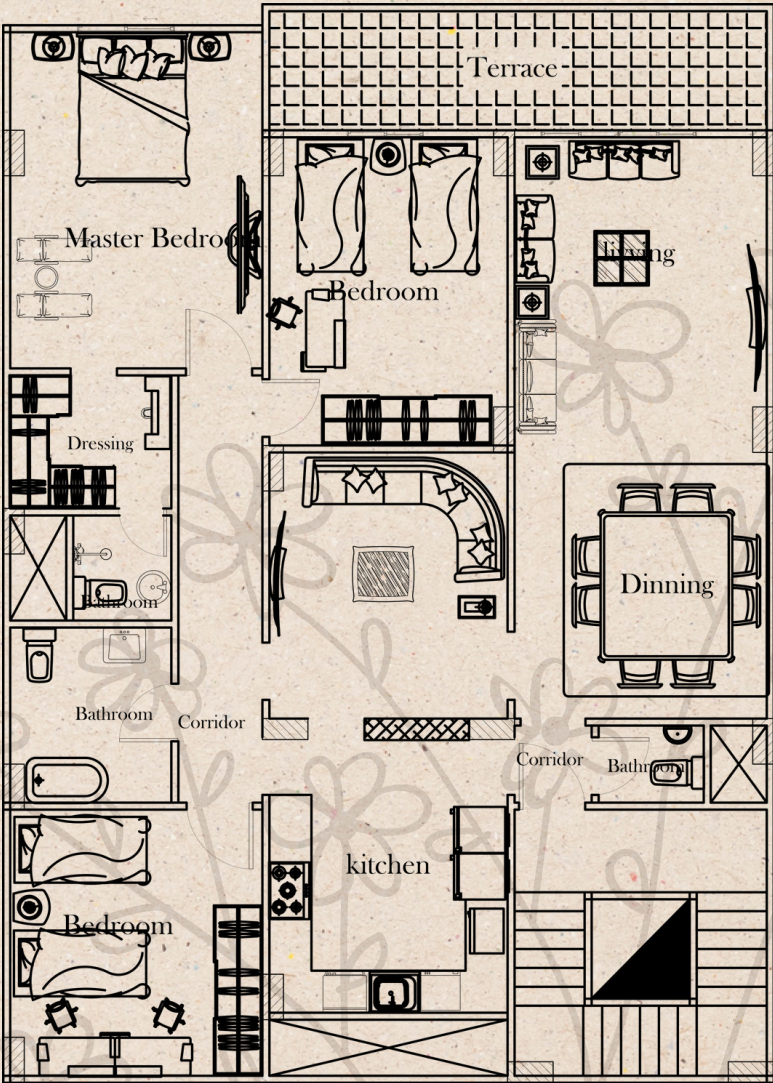
palette
#807A9E

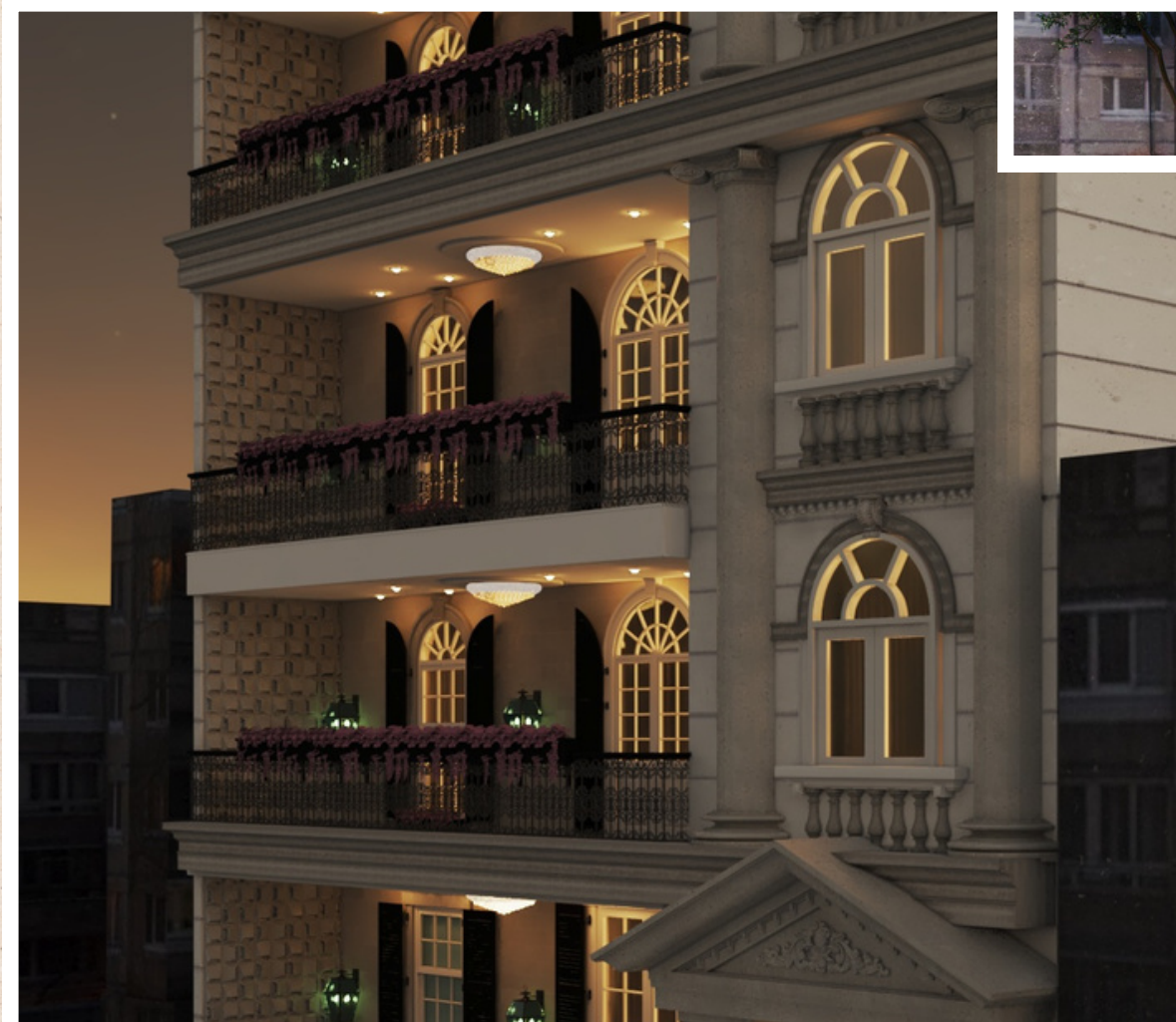
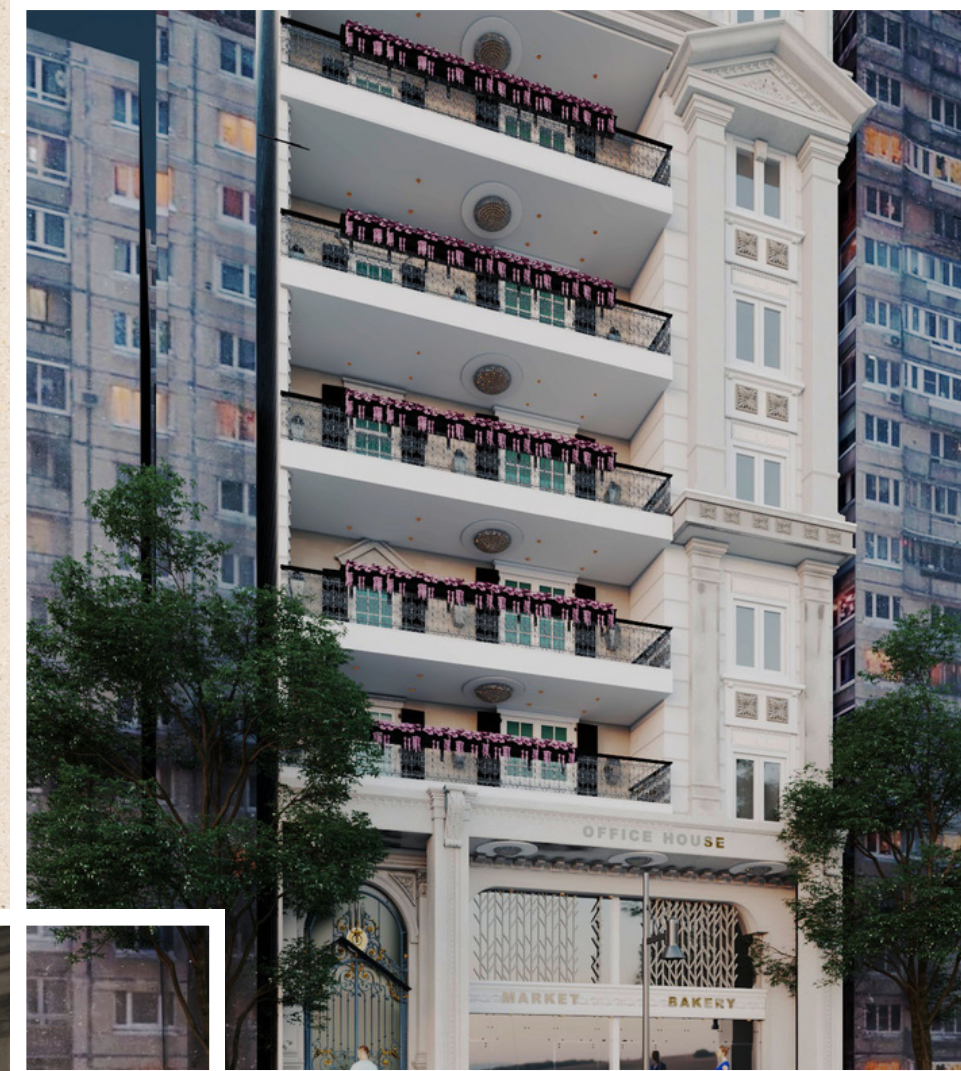


palette
#AAA4CC



palette
#B9B9BD







<https://www.behance.net/thosam365a73>

SANY RESORT

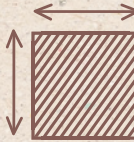
Designing a different tourist resort with an
attractive shape and distinctive details





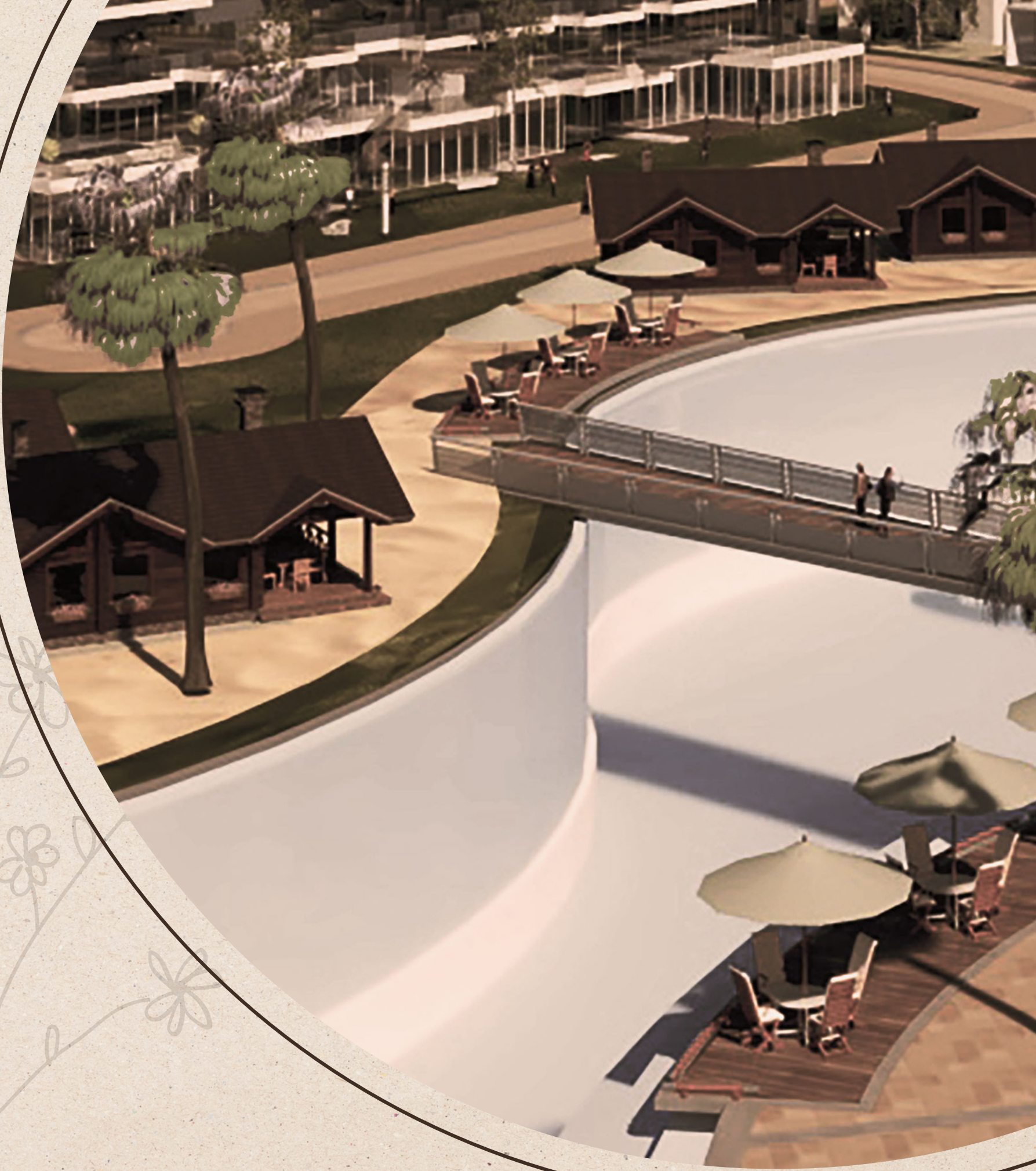
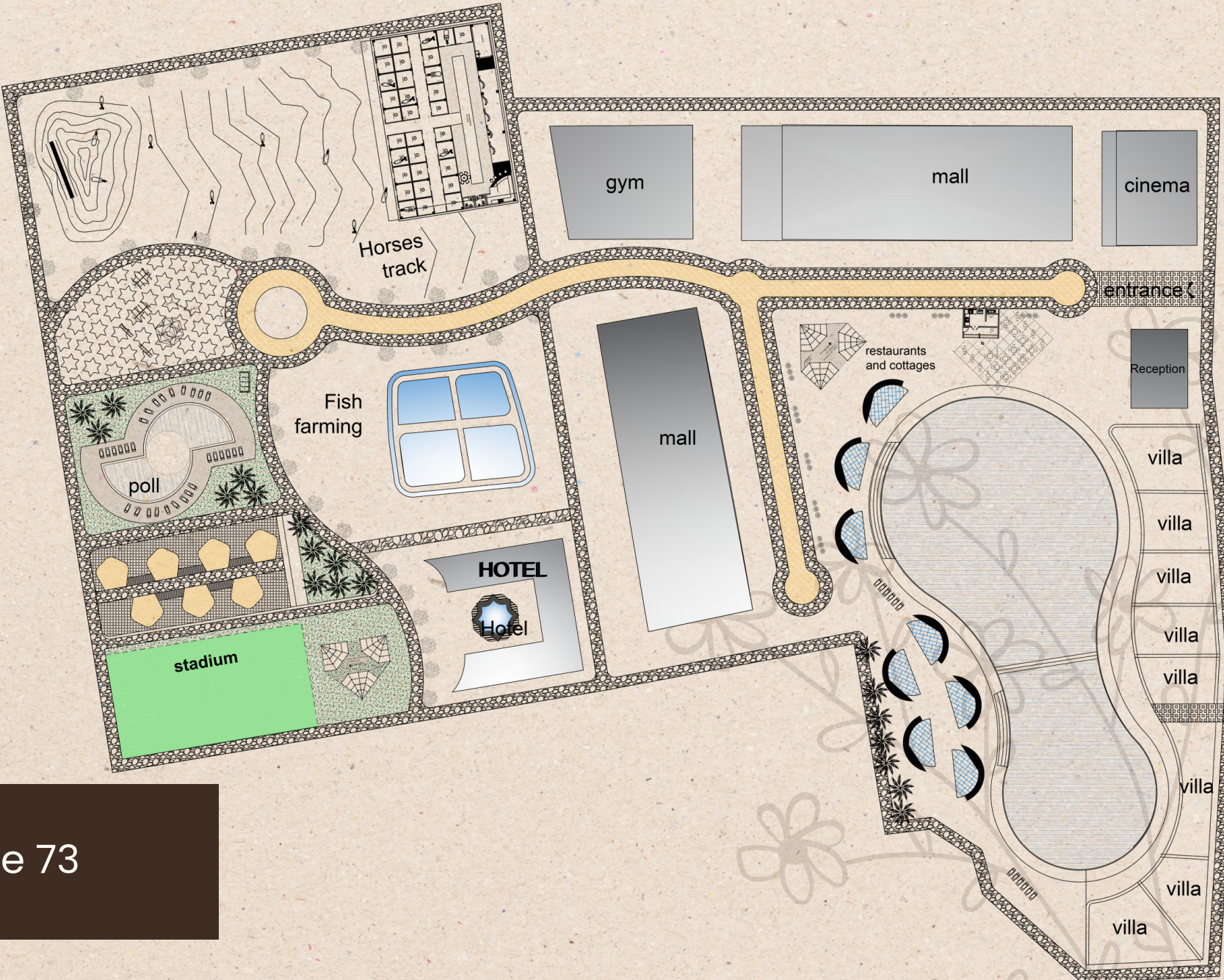
LOCATION :

GEORGIA

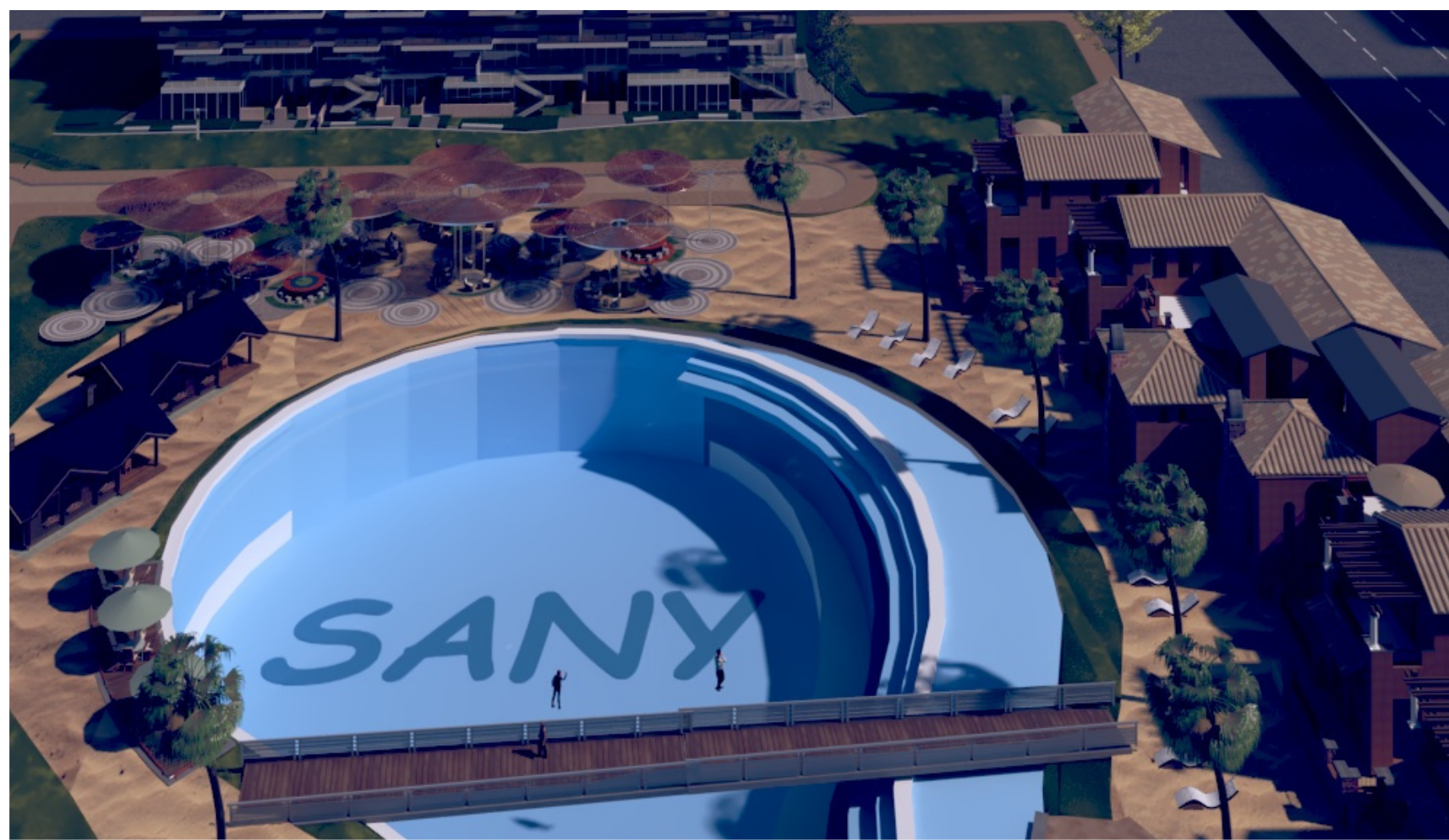


AREA SPACE :

10000M2









Contact With Us



Call

+201012463923

+966 532079475



Mail

thosam36@gmail.com



Web Address

https://linktr.ee/tasneem_hosam